

# HORDLE EXPLORERS

# Nursery Note

Friday 17th January 2025



## PARENT DROP INS

We are delighted to offer parents the opportunity to attend our nursery 'Drop in sessions' taking place on:

**Thursday 6th February, 3:30-4:30pm**

If you would like to have a brief informal discussion with some of the nursery team, please pop along to either Team Nest or Team Wild from 3.30pm. You are welcome to attend, even if your child does not attend the nursery on Thursdays.

Please note that we expect it will be particularly busy at 3.30pm and thank you in advance for your patience whilst waiting to speak with a member of the team.

Nest parents are welcome to access the Nest drop in sessions via the back gate. Team Wild sessions will be held at the Wild, accessed via the Wild gate.

## DEN PARENT SURVEY

Does your child attend either Breakfast or After School Club?

We value feedback from our parents and would like to ask you to reflect on your child's time at The Den Breakfast and After School Clubs so far this year and complete this questionnaire:

### Breakfast and After School Club Parent Survey

Thank you in advance for taking the time to complete this survey. Your contributions help us shape the service we provide.

Please provide your response by **Friday 24th January**.

Thank you,  
*Team Den*

## WINTER IN TEAM WILD & NEST

We have put together what we hope is a useful guide on clothing for winter outdoor play, specifically for children in Team Wild. Children in Team Nest spend much of their time outside too, so please provide warm clothing, waterproofs and wellies for their sessions in Spring term. Please don't forget to provide spare clothes in the children's bags.


If you have any questions at all please speak to a member of the Team.

# HORDLE EXPLORERS

## The Wild | Winter DRESS GUIDE

Team Wild has lots of play and learning that the children enjoy outside whatever the weather. Wearing the right clothes for the season helps to keep them comfortable and happy in their play.

Base Layer	Mid Layer	Outer Layer	Spares in bag
UNDERWEAR VEST NORMAL SOCKS TIGHTS / LEGGINGS	JOGGING BOTTOMS T-SHIRT AND LONG SLEEVE T-SHIRT WARM JUMPER THICK SOCKS	WATERPROOF COAT WATERPROOF TROUSERS (NO ALL-IN-ONES) WELLIES / WINTER BOOTS WELLY SOCKS	WARM COAT HAT GLOVES / MITTENS PLENTY OF EXTRA SPARES
<b>TOP TIP</b> Base layers are really important for insulating the body and keeping warm.	<b>TOP TIP</b> Mid layers are easy to layer up for colder days & create warm pockets around the child.	<b>TOP TIP</b> Waterproof layers keep the winter elements out so children stay dry and warm.	<b>TOP TIP</b> Layers made with fleece or wool are great for keeping children warm.





**PATCH**  
*Information Event*  
**31st January,**  
**9am**

# NEEDS *you!*

**Our current PATCH team has worked tirelessly to fundraise for wonderful additions to our school and nursery in recent years and we are extremely grateful for all their hard work.**

Sadly, next year, 3 of our key PATCH members will be leaving Hordle, as their children move on to secondary school.

This leaves us with a huge hole and with growing pressure on school budgets, sadly, without the funds raised by our highly valued PATCH team and the events they run, the school simply won't be able to afford the wonderful enhancements provided for our school and nursery.

In recent years, PATCH have successfully fundraised for:

- Daily Mile Track
- Trim trail equipment
- Library furniture
- Outdoor gym equipment
- Hall curtains / backdrop
- Outdoor shelters
- PA sound system and hall disco lighting
- Zip Wire
- PE Equipment
- Year 6 Leavers Hoodies
- Pantomime Performances
- Reindeer Visits

In short, we simply won't be able to offer the range of events that the PATCH team have introduced to the school over the years and that the children (and parents!) look forward to every year.

For example:

- Special Person's Day
- Secret Santa
- Storytime with Mrs Claus
- Summer Fair
- Christmas Raffle
- Disco

You already play a very important part by supporting at our PATCH events for which we are very thankful, but we need you more than ever!

If you can give a little bit of your time to help the school by joining the PATCH team, please sign up to our PATCH volunteer information event on **Friday 31st January at 9am** by completing **THIS FORM** or email [adminoffice@hordle.hants.sch.uk](mailto:adminoffice@hordle.hants.sch.uk)



## *Childrens Benefit*

Research shows that participating in your child's school showing engagement helps them perform better academically.

## *Schools Benefit*

The school simply couldn't afford the wonderful resources and enhancements provided by PATCH fundraising.



## *Make Connections*

Get to know the teachers, staff and parents better and make connections within the school community

## *It's good for you*

Socialising with other parents and volunteering to support your child and their school is fun and rewarding!



## *Want to know more?*

Please contact Mrs Collins in the school office who will be very happy to answer any questions you may have

# NURSERY COLLECTION

We'd like to remind parents that children can only be collected by adults with permission to do so.

The nursery team will not release your child to anyone (whether they are known to the school and nursery or not) for whom we have not received your prior permission.

If you would like to add a new carer's name please email [hen@hordleprimary.co.uk](mailto:hen@hordleprimary.co.uk)

Parents must notify the nursery of any changes to usual pick up routines.

## LABELLING BELONGINGS

Please ensure that all clothing items, waterproofs and wellies, hats, gloves, water bottles and lunch boxes are clearly named.



## NUT FREE ZONE

Please remember that we are a nut and sesame free nursery due to some severe allergies within both school and nursery. This includes desserts such as Battenburg and Bakewell, hummus and many cereal bars - please check ingredients before adding to your child's packed lunch.



# TAX FREE CHILDCARE

Parents can receive up to £500 every 3 months (up to £2000 a year) for each of your children to help with the costs of childcare at both Hordle Explorers Nursery and The Den Breakfast and After School Club. For every £8 you pay into this account, the government will pay in £2 to use to pay for nursery/Den fees so it is well worth applying if you are eligible.

Child under 12? You could get £2 for every £8 you spend on childcare.

[childcarechoices.gov.uk](http://childcarechoices.gov.uk)



Your eligibility depends on whether you are working, your income (and that of your partner), your child's age (the scheme is available up until age 11) and circumstances.

For further information on this scheme, to check your eligibility and set up an account please visit the [WEBSITE](#).

If eligible, you will be provided with a **unique Tax Free Childcare reference number**. This must be provided to us before you make any payments to either the school or nursery via this account. Please email your unique reference number to [hen@hordleprimary.co.uk](mailto:hen@hordleprimary.co.uk) Please entitle the email "TFC reference".

Please note that payments to us via the TFC scheme can take up to 5 working days (and usually longer for the first payment) and we require an email to confirm the date the payment was made and the total amount paid. This enables us to follow up on the payment with the Hampshire accounts team and allocate it accordingly.

# BREAKFAST CLUB FAMILIES - IMPORTANT

To ensure all children enjoy their time in Breakfast Club and to enable a smooth transition to Team Nest and Team Wild each day please can we remind parents of the following:

**If you wish your child to eat breakfast with us please arrive by 8.30am.**

This is to ensure there is enough time for the children to choose and eat a sufficient breakfast

**If you do not require breakfast for your child please arrive by 8:40am.**

After that the team starts getting children ready for the transition to their respective rooms.

*Thank you for your support in this matter*

# ATTENDANCE GUIDANCE

## What to do if my child is absent?

Please can we remind parents/guardians of our school and nursery absence procedures:

- Contact us as soon as possible (and before 9.30am at the latest) on the first day of absence; telephone (via the schools absence line), email or visit the school office
- Advise us on the nature of your child's absence. Please note that in the event of sickness and/or diarrhoea, the exclusion period is 48 hours since the last bout of illness.
- Update the school daily on subsequent days of absence unless advised otherwise

If your child is absent and we have not heard from you by 9.30am at the latest, we will telephone you and any other contacts that have been provided to us to confirm your child's whereabouts. This is because we have a safeguarding duty to ensure your child's safety as well as their regular nursery attendance. A child not attending nursery is considered a safeguarding matter. This is why information about the cause of any absence is always required.

Please help us to ensure the safeguarding of all children in our care.

## ILLNESS & EXCLUSION PERIODS

It can be tricky deciding whether or not to keep your child off school or nursery or when they're unwell. Please visit the [WEBSITE](#) for government guidelines about managing specific infectious diseases and advise for other illnesses.

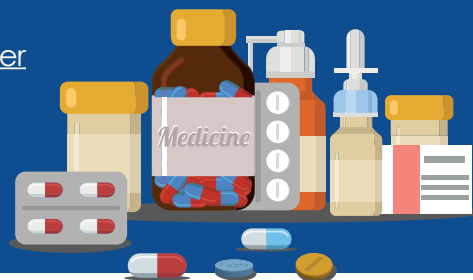
In the interest of everyone enjoying a happy, healthy time at Hordle Explorers Nursery, we ask that all parents note the minimum periods of exclusion from school of most common childhood illnesses.

Please view [Exclusion Periods After Illness document](#) for the up to date guidance.

## MEDICATION IN SCHOOL

If your child will require medication in nursery, including eye drops, creams and lotions, please ensure that you provide it to the nursery team at drop off and that you complete an **ADMINISTRATION OF MEDICINES FORM** (paper copies available from the school office). Medication must be in date and in the original packaging, clearly labelled with your child's name.

For the safety of your child and other children in nursery medication must not be left in your child's bag.



## IMPORTANT DATES

NEW DATES ARE IN **BOLD**

**THURSDAY 6TH FEBRUARY**

FRIDAY 14TH FEBRUARY

MONDAY 17TH - FRIDAY 21ST FEBRUARY

MONDAY 24TH FEBRUARY

FRIDAY 21ST MARCH

**TUESDAY 25TH MARCH**

**PARENT DROP-IN SESSION, 3:30-4:30PM**

2ND PAYMENT DUE - HEN INVOICES

SPRING HALF TERM HOLIDAY

SPRING TERM 2 START

INSET DAY - NURSERY CLOSED  
(DEN NOT AVAILABLE)

**NURSERY PORTRAITS (MORE DETAILS TO FOLLOW)**