

HORDLE EXPLORERS

Nursery Note

Friday 13th September 2024



Welcome back!

It has been lovely to welcome the children after the summer break and we hope they have all settled back in well.

A huge welcome to our new joiners who had incredibly successful settling sessions and are already learning the nursery routines and having lots of fun getting to know the children and staff.

INVOICES - AUTUMN TERM 2024

Autumn term 2024 invoices have been sent out last week. This invoice is for all sessions booked up to and including Friday 20th December.

If you would like to pay in 2 instalments, the first 50% is due by **Today, Friday 13th September** and the second 50% is due by **Friday 1st November 2024**.

Please note that a £20 surcharge will apply for late payments so please ensure timely payments are arranged to avoid unnecessary additional fees.

Payment methods:

Please see the email sent with your invoice for details on the various options available for making payment. Please note that if you are paying by Tax Free Childcare Scheme, we must receive your unique TFC code BEFORE you make a payment to us.

If you are paying by Childcare Vouchers please send an email to hen@hordleprimary.co.uk to advise that you have made a payment so that we can make the Hampshire Accounts team aware to enable payment to be allocated to Hordle Explorers.

If you have any questions regarding your invoice please do not hesitate to get in contact.

REMINDER FOR WORKING FAMILIES CLAIMING FUNDING IN THE AUTUMN TERM 2024

All parents who are working and want to claim funded extended hours (30 hours childcare) for 3 and 4 year olds or 2 year old funding for working families (15 hours), must make sure they have applied to HMRC in plenty of time before the start of funding period to ensure that your child will be funded in time.

All parents who are eligible and have been provided with a unique reference code need to make sure their details are up to date. They must do this every three months via the **WEBSITE**. We recommend applying in plenty of time as this process can take some time,

particularly if you are self-employed.

More information on help paying for your childcare - Childcare Choices, 30 Hours Free Childcare, Tax-Free Childcare and More can be found **HERE**.



BAG 2 SCHOOL COLLECTION - Tuesday 8th October

Your child will soon be coming home with a Bag 2 School collection bag next week. Please have a sort through your cupboards over the next few weeks and donate any unwanted, good quality clothing, paired shoes, hats, belts, handbags, ties and soft toys.

Our school and nursery receives money based on the total weight of the collection so the more we donate, the bigger the benefit to our school!

Bags will be collected on Tuesday 8th October and they can be dropped off to the front school car park from 3:30pm on Monday 9th October. If you fill the donation bag and still have more you can use any other bag to donate your items and don't forget to ask grandparents, friends and neighbours to have a sort out too!

Bags must be dropped to school no later than 9am on Tuesday 8th October.

AUTUMN IN TEAM WILD & NEST

The weather is certainly getting colder now and we have had a bit of rain recently. We have put together what we hope is a useful guide on clothing for autumn outdoor play, specifically for children in Team Wild. Children in Team Nest spend much of their time outside too, so please provide warm clothing, waterproofs and wellies for their sessions. Please don't forget to provide spare clothes in the children's bags.

If you have any questions at all please speak to a member of the Team.

HORDLE EXPLORERS

The Wild | Autumn DRESS GUIDE

Team Wild has lots of play and learning that the children enjoy outside whatever the weather. Wearing the right clothes for the season helps to keep them comfortable and happy in their play.

Base Layer	Mid Layer	Outer Layer	Spares in bag
UNDERWEAR VEST THICK SOCKS	JOGGING BOTTOMS LONG SLEEVE T-SHIRT WARM JUMPER	WATERPROOF COAT WATERPROOF TROUSERS (NO ALL-IN-ONES) WELLIES / WINTER BOOTS	PANTS SOCKS T-SHIRTS JUMPER
TOP TIP Thick socks keep feet warm and cosy in wellies. Autumn can be chilly so base layers are important to insulate children's bodies.	TOP TIP Mid layers are easy to layer up as it gets colder. Extra t-shirts or tights can be added under mid layers to keep children warm.	TOP TIP Pull waterproof trousers over wellies to prevent water from getting into them when splashing in big puddles and playing with water.	TOP TIP Layers made with fleece or wool are great for keeping children warm as the weather gets colder.

NURSERY COLLECTION

We'd like to remind parents that children can only be collected by adults with permission to do so.

The nursery team will not release your child to anyone (whether they are known to the school and nursery or not) for whom we have not received your prior permission.

If you would like to add a new carer's name please email hen@hordleprimary.co.uk

Parents must notify the nursery of any changes to usual pick up routines.

NUT FREE ZONE

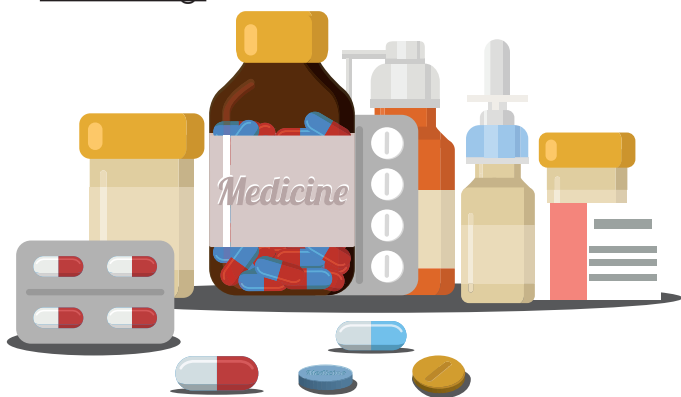
Please remember that we are a nut and sesame free nursery due to some severe allergies within both school and nursery. This includes desserts such as Battenburg and Bakewell, hummus and many cereal bars - please check ingredients before adding to your child's packed lunch.



MEDICATION IN SCHOOL

If your child will require medication in nursery, including eye drops, creams and lotions, please ensure that you provide it to the nursery team at drop off and complete the **ADMINISTRATION OF MEDICINES FORM**. Medication must be in date and in the original packaging, clearly labelled with your child's name.

For the safety of your child and other children in nursery medication must not be left in your child's bag.



INSET DAYS 2024/25

We are pleased to confirm the Inset Days for 2024/2025 as follows:



2024	2025
2nd September	6th January
3rd September	21st March
4th November	

Hampshire term dates for 2024/25 can be found **HERE**.

Please note that due to essential staff training taking place on Inset Days we will not be running The Den on these dates. We sincerely apologise for any inconvenience caused but wish to give as much notice as possible so that parents can make alternative arrangements.

BREAKFAST CLUB FAMILIES - IMPORTANT

To ensure all children enjoy their time in Breakfast Club and to enable a smooth transition to Team Nest and Team Wild each day please can we remind parents of the following:

If you wish your child to eat breakfast with us please arrive by 8.30am.

This is to ensure there is enough time for the children to choose and eat a sufficient breakfast

If you do not require breakfast for your child please arrive by 8:40am.

After that the team starts getting children ready for the transition to their respective rooms.

Thank you for your support in this matter

ATTENDANCE GUIDANCE

What to do if my child is absent

Please can we remind parents/guardians of our school and nursery absence procedures:

- Contact us as soon as possible (and before 9.30am at the latest) on the first day of absence; telephone (via the schools absence line), email or visit the school office
- Advise us on the nature of your child's absence. Please note that in the event of sickness and/or diarrhoea, the exclusion period is 48 hours since the last bout of illness.
- Update the school daily on subsequent days of absence unless advised otherwise

If your child is absent and we have not heard from you by 9.30am at the latest, we will telephone you and any other contacts that have been provided to us to confirm your child's whereabouts. This is because we have a safeguarding duty to ensure your child's safety as well as their regular nursery attendance. A child not attending nursery is considered a safeguarding matter. This is why information about the cause of any absence is always required.

Please help us to ensure the safeguarding of all children in our care.

Illness & exclusion periods

It can be tricky deciding whether or not to keep your child off school or nursery or when they're unwell. Please visit the [website](#) for government guidelines about managing specific infectious diseases and advise for other illnesses.

In the interest of everyone enjoying a happy, healthy time at Hordle Explorers Nursery, we ask that all parents note the minimum periods of exclusion from school of most common childhood illnesses.

Please view **Exclusion Periods After Illness document** for the up to date guidance.

Polite reminders

Labelling belongings

Please name all your child's belongings including school jumpers, wellies and coats.

Parking

We continue to receive regular complaints from neighbours regarding inconsiderate parking from our nursery parents. Please can we politely request that you park considerately, safely and with respect for our local community.

Dogs on site

Please remember that dogs are not allowed on school grounds, which include the area in front of Wild gates, even when on a lead or carried. Please ensure all dogs are tied to designated hooks located at the front of the school (school drive). Thank you for your understanding.

NURSERY TOURS

New nursery tour dates are now available for booking. If you or anyone you know have a younger child, who they would like to join our nursery from September 2025 and beyond, please get in touch by either emailing hen@hordleprimary.co.uk, via our website or call 01425611657.

Please see **POSTER** for more information.

IMPORTANT DATES

BAG2SCHOOL COLLECTION

AUTUMN HALF TERM HOLIDAY

INSET DAY

AUTUMN TERM 2 START

TUESDAY 8TH OCTOBER

MONDAY 28TH OCTOBER - FRIDAY 1ST NOVEMBER

MONDAY 4TH NOVEMBER - NURSERY CLOSED

TUESDAY 5TH NOVEMBER