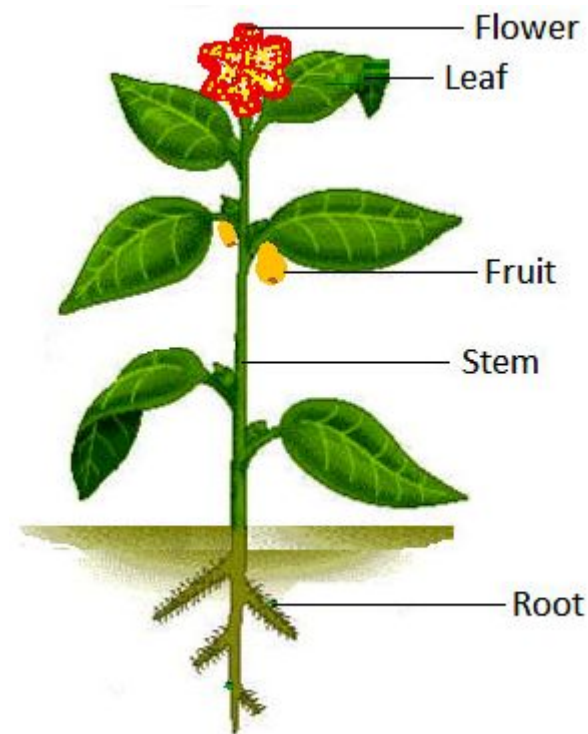




## Expert Vocabulary

Giant	an imaginary being who looks like a person but has enormous size and strength
Harp	a large musical instrument with an upright triangular frame. Harps have forty-six strings and are played by plucking the strings with the fingers
Beanstalk	the stem of a bean plant
Market	a place where fruit and vegetables are sold
Beans	the seed or seed pod of certain plants
Plant	one of a large group of living things that use sunlight to make their own food.
Sow	to plant or scatter in or over the ground
Root	the part of a plant that usually grows underground. Roots take up water and nutrients, and hold the plant in the soil
Stem	the main part of a plant that grows up from the ground and supports the branches, leaves, flowers, or fruits that may grow from it
Bud	a swelling on a plant that can grow into new parts, such as leaves or a flower

## Parts of a plant



## Facts/Understanding the World

Bamboo is the fastest-growing woody plant in the world; it can grow 89cm in a single day. The average strawberry has 200 seeds. Oak trees do not produce acorns until they become 50 years old. Apples, onions and potatoes have the same taste. Test this by closing your nose while eating them.