



That they may have life; life in all its fullness - John 10:10

Hordle CE (VA) Primary School

Child Protection Policy, Procedure and Safeguarding Guidance 2022

Any reference to 'the school' throughout this policy shall mean Hordle CE (VA) Primary School and Nursery.

Published September 2022





That they may have life; life in all its fullness - John 10:10

	Content	Page
	Child Protection Policy	3
	Roles and Responsibilities	6
	Child Protection Procedures	9
Annex 1	Flowchart for child protection procedures	11
Annex 2	Recording form	12
Annex 3	Skin maps	13
Annex 4	Dealing with disclosures	15
Annex 5	Allegations against staff	17
Annex 6	Peer on Peer Abuse	18
Annex 7	Brook sexual behaviours traffic light tool	21
Annex 8	Briefing sheet for temporary staff	24
Annex 9	What is child abuse	25
Annex 10	Useful contacts	31
	Table of changes	32



That they may have life; life in all its fullness - John 10:10

Hordle CE (VA) Primary School and Nursery Child Protection Policy

Policy Statement

We recognise our moral and statutory responsibility to safeguard and promote the welfare of all children.

We make every effort to provide a safe and welcoming environment underpinned by a culture of openness where both children and adults feel secure, able to talk and believe that they are being listened to.

We maintain an attitude of “it could happen here” where safeguarding is concerned.

The purpose of this policy is to provide staff, volunteers and governors with the framework they need in order to keep children safe and secure in our school and to inform parents and guardians how we will safeguard their children whilst they are in our care.

Specific guidance is available to staff within the procedure documents.

Definitions

Within this document:

Child protection is an aspect of safeguarding, but is focused on how we respond to children who have been significantly harmed or are at risk of significant harm.

The term **staff** applies to all those working for or on behalf of the school, full time or part time, in either a paid or voluntary capacity. This also includes parents and governors.

Child refers to all young people who have not yet reached their 18 birthday. On the whole, this will apply to pupils of our school; however the policy will extend to visiting children and students from other establishments

Parent refers to birth parents and other adults in a parenting role for example adoptive parents, step parents, guardians and foster carers.

Abuse could mean neglect, physical, emotional or sexual abuse or any combination of these. Parents, carers and other people can harm children either by direct acts and / or failure to provide proper care. Explanations of these are given within the procedure document.

Aims

To provide staff with the framework to promote and safeguard the wellbeing of children and in so doing ensure they meet their statutory responsibilities.

To ensure consistent good practice across the school.

To demonstrate our commitment to protecting children.

Principles and Values



That they may have life; life in all its fullness - John 10:10

- Children have a right to feel secure and cannot learn effectively unless they do so.
- All children have a right to be protected from harm.
- All staff have a key role in prevention of harm and an equal responsibility to act on any suspicion or disclosure that may indicate a child is at risk of harm, either in the school or in the community, taking into account *contextual safeguarding*, in accordance with the guidance.
- We acknowledge that working in partnership with other agencies protects children and reduces risk and so we will engage in partnership working throughout the child protection process to safeguard children.
- Whilst the school will work openly with parents as far as possible, it reserves the right to contact Children's Social Care or the police, without notifying parents if this is believed to be in the child's best interests.

Leadership and Management

We recognise that staff anxiety around child protection and safeguarding can compromise good practice and so we have established clear lines of accountability, training and advice to support the process and individual staff within that process.

In this school any individual can contact the Designated Safeguarding Lead (DSL) or the Deputy DSLs if they have concerns about a young person.

Details of the DSL Team can be found on the school website.

There is a nominated safeguarding governor, who will take leadership responsibility for safeguarding. The Chair of Governors, will receive reports of allegations against the headteacher and act on the behalf of the governing body.

As an employer we follow safer recruitment guidance as set out in KCSiE 2022.

Training

All staff in our school are expected to be aware of the signs and symptoms of abuse and must be able to respond appropriately. Full safeguarding training is provided every year and separate training is provided to all new staff on induction by one of the DSLs who deliver an in-year safeguarding package which we have devised which includes PREVENT and FGM guidance. The DSLs will attend training at least every other year to enable them to fulfil their role.

Any update in national or local guidance will be shared with all staff in briefings and then captured in the next whole school training. This policy will be updated during the year to reflect any changes brought about by new guidance.

Governor training is provided as required according to KCSiE 2022



That they may have life; life in all its fullness - John 10:10

Referral

Following any concerns raised, the DSL will assess the information and consider if significant harm has happened or there is a risk that it may happen. If the evidence suggests the threshold of significant harm, or risk of significant harm has been reached, or if it is not clear if the threshold is met, then the DSL will contact Children's Social Care and if appropriate the police. If the DSL is not available or there are immediate concerns, the staff member will refer directly to Children's Social Care and the police if appropriate.

Generally the DSL will inform the parents prior to making a referral. However there are situations where this may not be possible or appropriate, particularly when informing parents/carers may place the child at further risk.

***N.B.** The exception to this process will be in those cases of known FGM where there is a mandatory requirement for the teacher to report directly to the police. The DSL should also be made aware.*

Confidentiality

- We maintain that all matters relating to child protection are to be treated as confidential and only shared as per the 'Information Sharing Advice for Practitioners' (DfE 2015) guidance
- There is a lawful basis for child protection concerns to be shared with agencies who have a statutory duty for child protection.
- Information will be shared with individuals within the school who 'need to know'.
- All staff are aware that they cannot promise a child to keep a disclosure confidential.

As a school we will educate pupils to recognise when they are at risk, encourage them to keep safe and educate them how to get help when they need it through:

- The content of the curriculum
- A school ethos which helps children to feel safe and able to talk freely about their concerns, believing that they will be listened to and valued.
- Every child having access to a 'trusted adult' in school
- Children will be taught about how to keep themselves and others safe when online

Dealing with allegations against staff

If a concern is raised about the practice or behaviour of a member of staff this information will be recorded and passed to the headteacher. The headteacher will make an assessment to determine if the matter is a 'low level concern' or an 'allegation.' The Local Authority Designated Officer (LADO) will be contacted for all allegations and the relevant



That they may have life; life in all its fullness - John 10:10

guidance will be followed. If the headteacher needs advice or guidance they will contact the LADO.

If the allegation is against the headteacher, the person receiving the allegation will contact the LADO or Chair of Governors directly. (Annex 5)

Dealing with allegations against pupils

If a concern is raised that a child under 18 is abusing another child under 18, the 'Child on Child Abuse' guidance will be followed (Annex 6)

Legal context

Section 175 of the Education Act 2002; the Education (Independent School Standards) Regulations 2014; the Non-Maintained Special Schools (England) Regulations. Children Act 2004 & 1989

Guidance

Hampshire Safeguarding Children Partnership protocols and guidance and their procedures

[Working Together to Safeguard Children \(2018\)](#)

[Keeping Children Safe in Education \(2022\)](#)

[FGM Act 2003 Mandatory Reporting Guidance \(2016\)](#)

Policy review

As a school, we review this policy at least annually in line with DfE, HSCEP and HCC requirements and other relevant statutory guidance.

Date approved by governing body:

Date reviewed by governing body:



That they may have life; life in all its fullness - John 10:10

Roles and responsibilities within Hordle CE(VA)Primary school and Nursery

Staff responsibilities

All staff have a key role to play in identifying concerns early and in providing help for children. To achieve this they will:

- Establish and maintain an environment where children feel secure, are encouraged to talk and are listened to.
- Ensure children know that there are adults in the school who they can approach if they are worried or have concerns.
- Plan opportunities within the curriculum for children to develop the skills they need to assess and manage risk appropriately and keep themselves safe.
- Attend training in order to be aware of and alert to the signs of abuse.
- Maintain an attitude of “it could happen here” with regards to safeguarding.
- Be aware that mental health problems can, in some cases, be an indicator that a child has suffered or is at risk of suffering abuse, neglect or exploitation
- Recognise that abuse, neglect, or other adverse childhood experiences, can have an impact on the mental health, behaviour and education of children.
- Record their concerns if they are worried that a child is being abused and report these to the DSL as soon as practical that day. If the DSL is not contactable immediately a Deputy DSL should be informed
- Be prepared to refer directly to social care, and the police if appropriate, if there is a risk of significant harm and the DSL or their Deputy is not available.
- Follow the allegations procedures (Annex 5) if the disclosure is an allegation against a member of staff.
- Follow the procedures set out by the HSCB and take account of guidance issued by the DfE.
- Support pupils in line with their child protection plan.
- Treat information with confidentiality but never promising to “keep a secret”.
- Notify the DSL or their Deputy of any child on a child protection plan or child in need plan who has unexplained absence.
- Have an understanding of early help, and be prepared to identify and support children who may benefit from early help.
- Liaise with other agencies that support pupils and provide early help.
- Ensure they know who the DSL and Deputy DSL are and know how to contact them.



That they may have life; life in all its fullness - John 10:10

- Have an awareness of the Child Protection Policy, the Behaviour Policy, the Staff Behaviour Policy (or Code of Conduct), procedures relating to the safeguarding response for children who go missing from education and the role of the DSL.

Senior Management Team responsibilities:

- Contribute to inter-agency working in line with 'Working Together to Safeguard Children 2018 guidance'
- Provide a co-ordinated offer of early help when additional needs of children are identified
- Ensure staff are alert to the various factors that can increase the need for early help (*para 19 KCSiE 2021*)
- Working with Children's Social Care, support their assessment and planning processes including the school's attendance at conference and core group meetings.
- Carry out tasks delegated by the governing body such as training of staff, safer recruitment and maintaining a single central register.
- Provide support and advice on all matters pertaining to safeguarding and child protection to all staff regardless of their position within the school.
- Treat any information shared by staff or pupils with respect and follow agreed policies and procedures.
- Ensure that allegations or concerns against staff are dealt with in accordance with guidance from Department for Education (DfE) and the Hampshire Safeguarding Children Board (HSCP) procedures.
- Determine if a concern about a member of staff is a 'low level concern' or an 'allegation'

Governing body responsibilities

- Ensure the school has effective safeguarding policies and procedures including a Child Protection Policy, a Staff Behaviour Policy or Code of Conduct, a Behaviour Policy and a response to children who go missing from education.
- Ensure HSCP is informed in line with local requirements about the discharge of duties via the annual safeguarding audit
- Recruitment, selection and induction follows safer recruitment practice including all appropriate checks.



That they may have life; life in all its fullness - John 10:10

- Allegations against staff are dealt with by the headteacher. Allegations against the headteacher are dealt with by the Chair of Governors
- A member of the Senior Leadership Team is appointed as Designated Safeguarding Lead (DSL) and has this recorded in their job description
- Staff have been trained appropriately and this is updated in line with guidance
- Any safeguarding deficiencies or weaknesses are remedied without delay
- A nominated governor for safeguarding is identified

DSL responsibilities *(to be read in conjunction with DSL role description in KCSiE)*

In this school the DSL is the SENCO

The Deputy DSLs are: Headteacher, Deputy Headteacher, **Early Years' Phase Leader**

Details of the school's DSLs can be found on the school website.

In addition to the role of all staff and the senior management team, the DSLs will

- Refer cases to social care, and the police where appropriate, in a timely manner avoiding any delay that could place the child at more risk.
- Assist the Governing Body in fulfilling their safeguarding responsibilities set out in legislation and statutory guidance
- Attend appropriate training and demonstrate evidence of continuing professional development to carry out the role.
- Ensure every member of staff knows who the DSL and the Deputies are, have an awareness of the DSL role and know how to contact them.
- Ensure all staff and volunteers understand their responsibilities in being alert to the signs of abuse and responsibility for referring any concerns about a child to the DSL and concerns about an adult to the Headteacher.
- Ensure whole school training occurs regularly with at least annual updates so that staff and volunteers can fulfil their responsibilities knowledgeably.
- Ensure any members of staff joining the school outside of the agreed training schedule receive induction prior to commencement of their duties
- Keep records of child protection concerns securely and separately from the main pupil file and use these records to assess the likelihood of risk
- Ensure that safeguarding records are transferred accordingly (separate from pupil files) and in a timely fashion when a child transfers school, including in year transfers.
- Ensure that where a pupil transfers school and is on a child protection plan or is a child looked after, their information is passed to the new school immediately and that the child's social worker is informed. Consideration is



That they may have life; life in all its fullness - John 10:10

given to a transition meeting prior to moving if the case is complex or on-going.

- Be aware of the training opportunities and briefings provided by HSCP to ensure staff are aware of the latest local guidance on safeguarding
- Develop, implement and review procedures in the school that enable the identification and reporting of all cases, or suspected cases, of abuse.
- Meet any other expectations set out for DSLs in KCSiE 2021



That they may have life; life in all its fullness - John 10:10

Hordle CE(VA)Primary School and Nursery Child Protection Procedures

Overview

The following procedures apply to all staff working in the school and will be covered by training to enable staff to understand their role and responsibility.

The aim of our procedures is to provide a robust framework which enables staff to take appropriate action when they are concerned that a child is being harmed or is at risk of harm.

The prime concern at all stages must be the interests and safety of the child. Where there is a conflict of interest between the child and an adult, the interests of the child must be paramount.

All staff are aware that very young children, those with disabilities, special needs, certain medical conditions or with a language deficit/English as a second language may have more difficulty in communicating concerns or feelings. They may be more likely to communicate concerns with behaviours rather than words. Additionally staff will question the cause of knocks and bumps in children who have limited mobility, which will include children (for example younger siblings) visiting the site in addition to pupils.

If a member of staff suspects abuse, spots signs or indicators of abuse, or they have a disclosure of abuse made to them they must:

1. Make an initial record of the information
2. Report it to the DSL immediately
3. The DSL will consider if there is a requirement for immediate medical intervention, however urgent medical attention should not be delayed if the DSL is not immediately available (see point 8 below)
4. Make an accurate and thorough record (which may be used in any subsequent court proceedings) as soon as possible using the CPOMS site and within 24 hours of the occurrence, of all that has happened, including details of:
 - Dates and times of their observations
 - Dates and times of any discussions in which they were involved.
 - Any injuries
 - Explanations given by the child / adult
 - What action was taken



That they may have life; life in all its fullness - John 10:10

- Which DSL was notified and at what time
- Any actual words or phrases used by the child
- Where appropriate a transcript of the conversation

The records must be completed with the date, time and all other necessary details by the author using the school's electronic recording software, CPOMS. This must be done in accordance with the information provided at the annual training.

5. In the absence of the DSL or their Deputy, be prepared to refer directly to Children's Social Care (and the police if appropriate) if there is the potential for immediate, significant harm. DSLs are always available and can be contacted – even when offsite – using mobile phones.

Following a report of concerns the DSL must:

- Decide whether or not there are sufficient grounds for suspecting significant harm in which case a referral must be made to Children's Social Care and the police if it is in keeping with the National Police Chiefs Council "[When to call the Police](#)" guidance. The rationale for this decision should be recorded by the DSL
- Normally the school should try to discuss any concerns about a child's welfare with the family and where possible to seek their agreement before making a referral to Children's Social Care. However, in accordance with DfE guidance, this should only be done when it will not place the child at increased risk or could impact a police investigation. Where there are doubts or reservations about involving the child's family, the DSL should clarify with Children's Social Care or the Police whether the parents should be told about the referral and, if so, by whom. This is important in cases where the police may need to conduct a criminal investigation. The child's views should also be taken into account when appropriate.
- If there are grounds to suspect a child is suffering, or is likely to suffer, significant harm the DSL (or Deputy) must contact Children's Social Care via the Inter-Agency Referral Form (IARF) making a clear statement of:
 - the known facts
 - any suspicions or allegations
 - whether or not there has been any contact with the child's family

(IARF can be accessed at the following page
<https://www.hants.gov.uk/socialcareandhealth/childrenandfamilies/contacts>)



That they may have life; life in all its fullness - John 10:10

If there is indication that the child is suffering significant harm, a call will also be made to Children's Reception Team (CRT) on 01329 225379.

If the DSL feels unsure about whether a referral is necessary they can phone CRT to discuss concerns

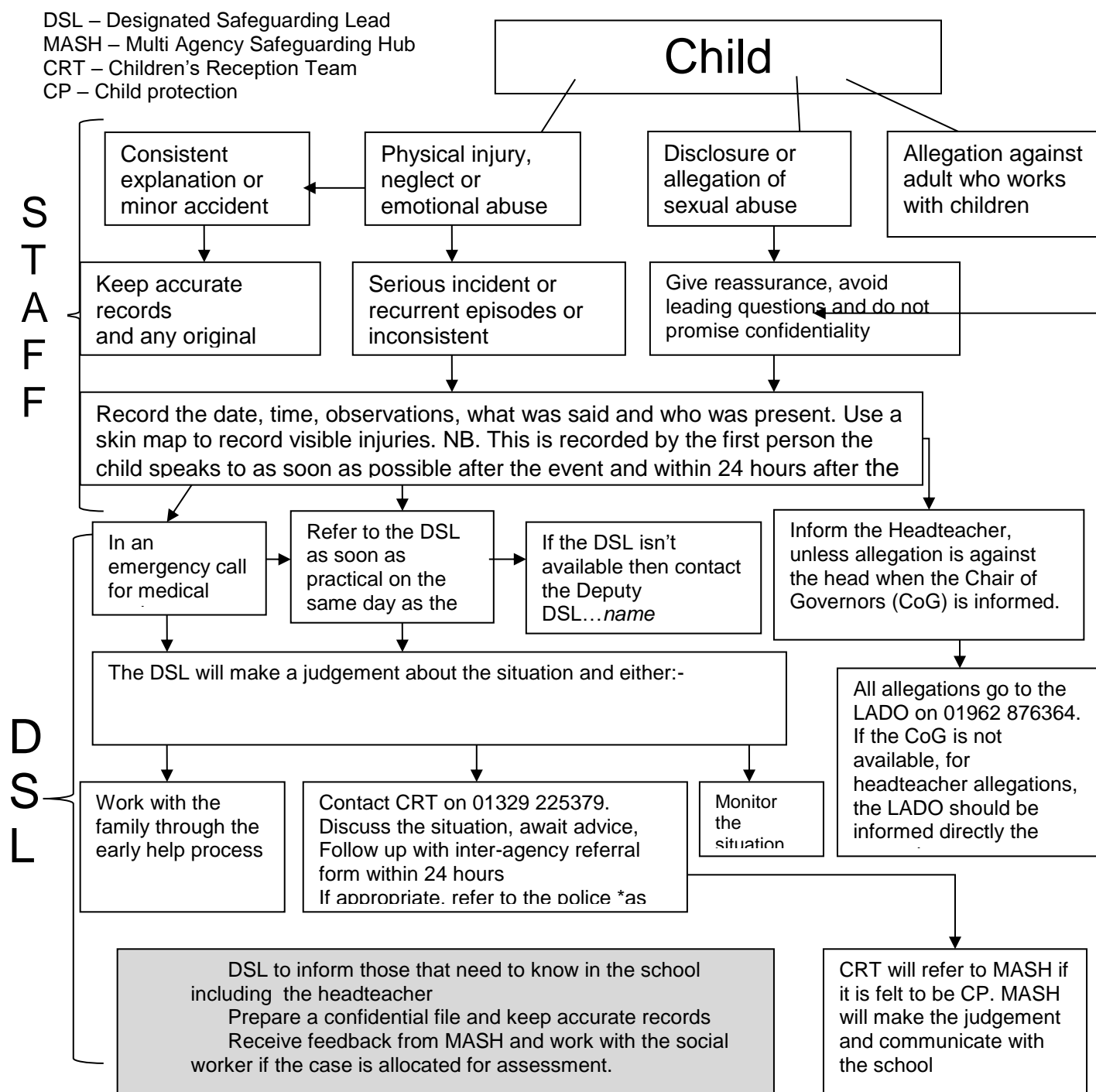
- If a child is in immediate danger and urgent protective action is required, the police must be called. The DSL must also notify Children's Social Care of the occurrence and what action has been taken
- When a pupil is in need of *urgent* medical attention and there is suspicion of parental abuse causing the medical need, the DSL or their Deputy should take the child to the accident and emergency unit at the nearest hospital and inform Children's Social Care. Advice should be sought from Children's Social Care about informing the parents, remembering that parents should normally be informed that a child requires urgent hospital attention.
- If there is not a risk of significant harm, the DSL will either actively monitor the situation or consider the Early Help process.
- In cases of allegations against staff or low level concerns, the HSCP procedure or the school Low Level Concerns (LLC) procedure will be followed.



That they may have life; life in all its fullness - John 10:10

Flowchart for child protection procedures

Flowchart



* In the cases of known FGM, the teacher who was made aware will also make contact with the police

Annex 2

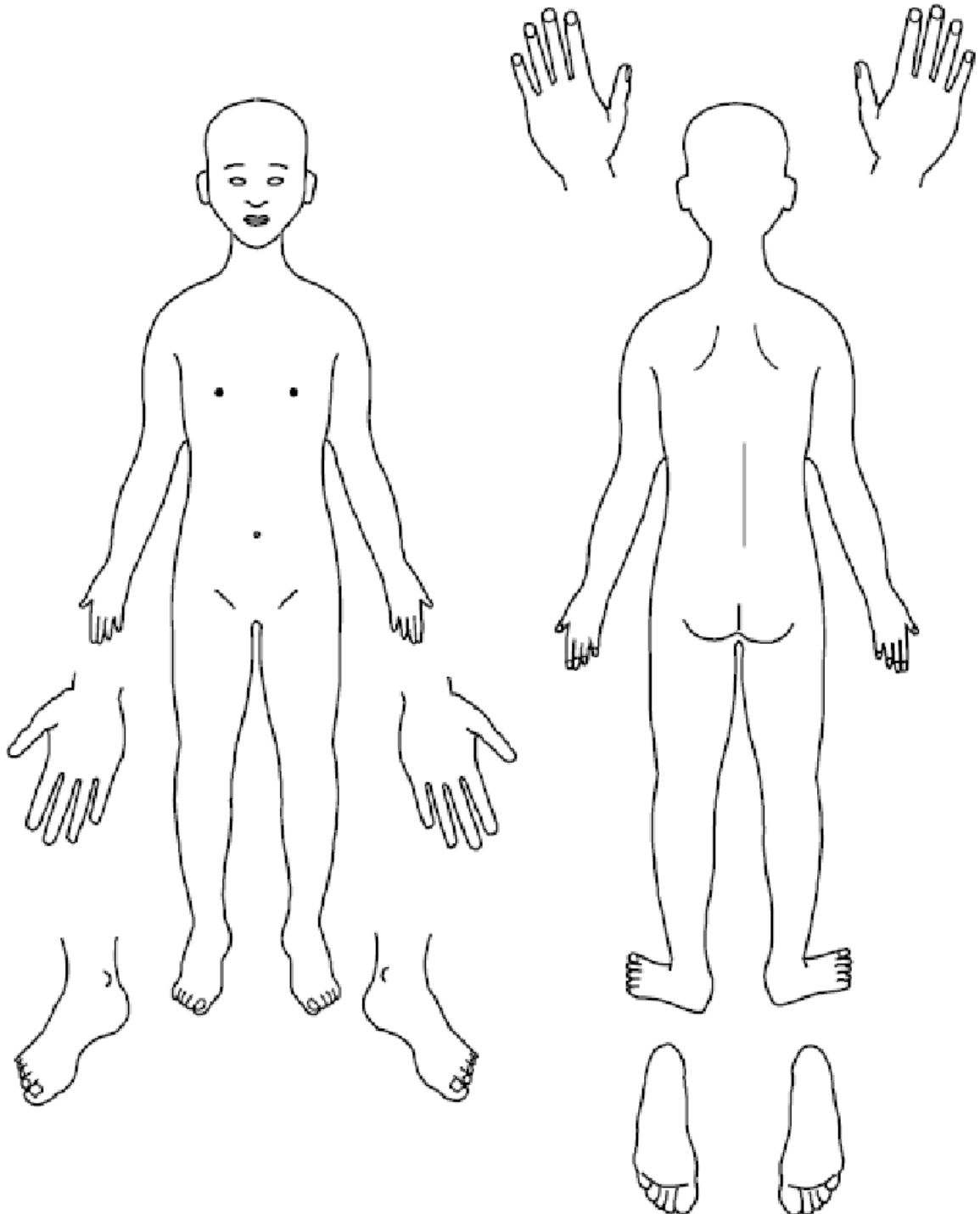


That they may have life; life in all its fullness - John 10:10

Name:

Designation:

Copied to:





That they may have life; life in all its fullness - John 10:10

Skin map

Name of Child: _____

Date of birth: _____ Date of recording: _____

Name of completer: _____





That they may have life; life in all its fullness - John 10:10

Dealing with disclosures

All staff should:

A member of staff who is approached by a child should listen positively and try to reassure them. They cannot promise complete confidentiality and should explain that they may need to pass information to other professionals to help keep the child or other children safe. The degree of confidentiality should always be governed by the need to protect the child.

Additional consideration needs to be given to children with communication difficulties and for those whose preferred language is not English. It is important to communicate with them in a way that is appropriate to their age, understanding and preference.

All staff should know who the DSL is and who to approach if the DSL is unavailable. Ultimately, all staff have the right to make a referral to the police or social care directly and should do this if, for whatever reason, there are difficulties following the agreed protocol, e.g. they are the only adult on the school premises at the time and have concerns about sending a child home.

Guiding principles, the seven R's

Receive

- Listen to what is being said, without displaying shock or disbelief
- Accept what is said and take it seriously
- Make a note of what has been said as soon as practicable

Reassure

- Reassure the pupil, but only so far as is honest and reliable
- Don't make promises you may not be able to keep e.g. 'I'll stay with you' or 'everything will be alright now' or 'I'll keep this confidential'
- Do reassure e.g. you could say: 'I believe you', 'I am glad you came to me', 'I am sorry this has happened', 'We are going to do something together to get help'

Respond

- Respond to the pupil only as far as is necessary for you to establish whether or not you need to refer this matter, but do not interrogate for full details



That they may have life; life in all its fullness - John 10:10

- Do not ask 'leading' questions i.e. 'did he touch your private parts?' or 'did she hurt you?' Such questions may invalidate your evidence (and the child's) in any later prosecution in court
- Do not ask the child why something has happened.
- Do not criticise the alleged perpetrator; the pupil may care about him/her, and reconciliation may be possible
- Do not ask the pupil to repeat it all for another member of staff. Explain what you have to do next and whom you have to talk to. Reassure the pupil that it will be a senior member of staff

Report

- Share concerns with the DSL as soon as possible. If this cannot be done face to face DSL contact details are available on the Staff Hub
- If you are not able to contact your DSL or the Deputy, and the child is at risk of immediate harm, contact the children's services department directly
- If you are dissatisfied with the level of response you receive following your concerns, you should press for re-consideration

Record

- If possible make some very brief notes at the time, and write them up as soon as possible
- Keep your original notes on file (These should be uploaded to CPOMS)
- Record the date, time, place, persons present and noticeable nonverbal behaviour, and the words used by the child. If the child uses sexual 'pet' words, record the actual words used, rather than translating them into 'proper' words
- Complete a body map to indicate the position of any noticeable bruising or marks
- Record facts and observable things, rather than your 'interpretations' or 'assumptions'

Remember

- Support the child: listen, reassure, and be available
- Complete confidentiality is essential. Share your knowledge only with appropriate professional colleagues



That they may have life; life in all its fullness - John 10:10

- Try to get some support for yourself if you need it
- All staff should be aware that children may not feel ready or know how to tell somebody that they are being abused, exploited or neglected and/or they may not recognise their experiences as harmful.

Review (led by DSL)

- Has the action taken provided good outcomes for the child?
- Did the procedure work?
- Were any deficiencies or weaknesses identified in the procedure? Have these been remedied?
- Is further training required?

What happens next?

It is important that concerns are followed up and it is everyone's responsibility to ensure that they are. The member of staff should be informed by the DSL what has happened following the report being made. If they do not receive this information they should be proactive in seeking it out.

If a staff member believes that their concerns have not been referred on or that the child remains at risk, they should initially ask the DSL to reconsider, ensuring that the risks are understood. If this does not result in a satisfactory outcome, or the DSL rationale appears to miss the risk to the child, the Whistleblowing procedures of the school should be followed. If the DSL is unhappy with the response from Children's Social Care, they should consider following the HSCB escalation protocol.

Receiving a disclosure can be upsetting for the member of staff and schools should have a procedure for supporting them after the disclosure. This might include reassurance that they have followed procedure correctly and that their swift actions will enable the allegations to be handled appropriately. There is a Staff Supervision policy in place to support Emotional Wellbeing of staff.

In some cases additional counselling might be needed and staff should be encouraged to recognise that disclosures can have an impact on their own emotions.



That they may have life; life in all its fullness - John 10:10

Annex 5

Allegations against adults who work with children

Working Together to Safeguard Children (2018) states that organisations should have clear policies for dealing with allegations against people who work with children. Those policies should make a clear distinction between an allegation, a complaint or a concern about the quality of care and practice.

Allegations, as defined by KCSiE, should be reported to the LADO. Complaints or concerns can be managed independently by the school under internal procedures.

Complaints could include:-

- Breaches of the Code of Conduct
- Failure to follow policy, procedure or guidance
- Any breach of data protection or confidentiality
- Poor behaviour management
- Inappropriate use of social media
- Misadministration of medication

Concerns could include:-

- Inappropriate use of language, shouting or swearing
- Discussing personal or sexual relationships with, or in the presence of, pupils
- Making (or encouraging others to make) unprofessional comments which scapegoat, demean or humiliate children, or might be interpreted as such

Lower Level Concerns LLCs, which do not reach the allegations harm threshold (or complaints criteria) should be dealt with under a school LLC procedure.

Procedure for Allegations that meet the harm threshold

This procedure should be used in all cases in which it is alleged a member of staff or volunteer in a school, or another adult who works with children has:

- **behaved in a way that has harmed a child, or may have harmed a child;**
- **possibly committed a criminal offence against or related to a child;**
- **behaved towards a child or children in a way that indicates he or she would pose a risk of harm to children; or**



That they may have life; life in all its fullness - John 10:10

- **behaved or may have behaved in a way that indicates they may not be suitable to work with children.**

When considering allegations of suitability, (the fourth criteria above) the LADOs would consider the following situations:

- Parents of children who are placed on a CIN plan or are receiving Early Help;
- Arrests for offences against adults;
- Presentation to other professionals around mental health, domestic abuse and/or substance misuse;
- Extreme political or religious viewpoints which could be considered Hate Crime;
- Concerns about behaviour in their private lives which may impact on children

In any of these situations the LADO criteria for intervention in any of these situations will be assessed against the likelihood and impact of transferable risk to children.

In line with our referral process:

- Staff will report any concerns about the conduct of any member of staff, supply staff or volunteer to the Headteacher as soon as possible
- If an allegation is made against the Headteacher, the concerns need to be raised with the Chair of Governor as soon as possible. If the Chair of Governors is not available, then the LADO should be contacted directly.
- There may be situations when the Headteacher or Chair of Governors will want to involve the police immediately if the person is deemed to be an immediate risk to children or there is evidence of a possible criminal offence.
- Once an allegation has been received by the Headteacher or Chair of Governors they will contact the LADO on 01962 876364 or



That they may have life; life in all its fullness - John 10:10

child.protection@hants.gov.uk as soon as possible and before carrying out any investigation into the allegation.

- Inform the parents of the allegation unless there is a good reason not to do so.

In liaison with the LADO, the school will determine how to proceed and if necessary, the LADO will refer the matter to Children's Social Care and/or the police.

When receiving information from outside agencies about school staff, the LADO will assess the potential for transferable risk, and make a disclosure to the school where there is a likelihood of transferable risk to children and there is a pressing need.

If the matter is investigated internally, the LADO will advise the school to seek guidance from their personnel/HR provider in following procedures set out in chapter 4 of 'Keeping Children Safe in Education' (2021) and the HSCP procedures

http://4lscb.proceduresonline.com/hampshire/p_alleg_against_staff.html.

Supply Staff

While supply staff are not the employee of the school, it is still required that the school report the allegation to the LADO.

If the matter requires an internal investigation, this will be carried out by the school in liaison with a HR rep (acting as the employer) from the supply agency.

Lower Level Concerns (LLC)

The LLC policy is part of the whole school approach to safeguarding. The purpose of the policy is to encourage an open and transparent culture, which enables the school or College to identify concerning, problematic or inappropriate behaviour at an early stage. It should also empower staff to share LLCs with the DSL. LLCs will be managed independently by the school or college under internal procedures.

Examples of LLCs include, but is not limited to:-

- being over friendly with children;
- having favourites;
- taking photographs of children on their mobile phone;



That they may have life; life in all its fullness - John 10:10

- engaging with a child on a one-to-one basis in a secluded area or behind a closed door;

or,

- using inappropriate sexualised, intimidating or offensive language.

The LLC policy will:-

- Ensure that staff are clear about what constitutes appropriate behaviour, and are confident in distinguishing expected and appropriate behaviour from concerning, problematic or inappropriate behaviour, in themselves and others;
- Empower staff to share any low-level safeguarding concerns with the DSL
- Address unprofessional behaviour and support the individual to correct this at an early stage.
- Provide a responsive, sensitive and proportionate handling of such concerns when they are raised.
- Help identify any weakness in the school or colleges safeguarding system.

In line with the LLC policy:-

- All LLCs will be shared responsibly with the DSL, recorded in writing and dealt with in an appropriate and timely manner.
- All LLCs will be reviewed, so that potential patterns of concerning, problematic or inappropriate behaviour can be identified.
- If LLCs are found to be escalating and are reaching the harm threshold, A referral will be made to the LADO.

If there is any doubt about the level at which behaviour needs to be addressed, LADO advice will be taken.



That they may have life; life in all its fullness - John 10:10

Annex 6

Sexual violence and sexual harassment between children in schools and colleges

Peer on Peer Abuse

Context

This policy is about how staff should respond to all reports and concerns of child-on-child sexual violence and sexual harassment, including those that have happened outside of school or college premises, and or online. All staff are advised to maintain an attitude of “It could happen here”

Schools and colleges not recognising, acknowledging or understanding the scale of harassment and abuse, and /or downplaying some behaviours relating to abuse can lead to a culture of unacceptable behaviour, an unsafe environment and in a worst case scenario a culture that normalises abuse leading to children accepting it as normal and not coming forward to report it.

Sexual violence and sexual harassment can occur between two children of any age and sex. It can also occur through a group of children sexually assaulting or sexually harassing a single child or group of children.

Children who are victims of sexual violence and sexual harassment will likely find the experience stressful and distressing. This will, in all likelihood, adversely affect their educational attainment as well as their emotional well-being. Sexual violence and sexual harassment exist on a continuum and may overlap; they can occur online and offline (both physically and verbally) and are never acceptable. It is important that all victims are taken seriously and offered appropriate support. It is also important to recognise that some perpetrators may themselves also be victims.

Reports of sexual violence and sexual harassment are extremely complex to manage. It is essential that victims are protected, offered appropriate support and every effort is made to ensure their education is not disrupted. It is also important that other children, adult students and school and college staff are supported and protected as appropriate.

Policy

We believe that all children have a right to attend school and learn in a safe environment. Children should be free from harm by adults in the school and other children.



That they may have life; life in all its fullness - John 10:10

We recognise that children are capable of abusing their peers and this will be dealt with under our child protection policy and in line with KCSiE (2022)

This policy is underpinned by the principle that there is a zero-tolerance approach to sexual violence and sexual harassment. We are clear that sexual violence and sexual harassment is not acceptable, will never be tolerated and is not an inevitable part of growing up.

We will minimise the risk of peer on peer abuse by:-

Prevention:

- Taking a whole school approach to safeguarding & child protection
- Providing training to staff
- Providing a clear set of values and standards, underpinned by the school's behaviour policy and pastoral support system, and by a planned programme of content delivered through PSHE sessions.
- Engaging with specialist support and interventions.

Responding to reports of sexual violence and sexual harassment:

- Children making a report of sexual violence or sexual harassment will be taken seriously, kept safe and be well supported.
- Understanding that our initial response to a report from a child is incredibly important and can encourage or undermine the confidence of victims of sexual violence and harassment to report or to come forward in the future.
- If the report includes an online element staff will be mindful of the Searching, Screening and Confiscation: advice for schools (DfE 2018) guidance.
- Staff taking the report will inform the DSL or their Deputy as soon as practicably possible but at least within 24 hours.
- Staff taking a report will never promise confidentiality.
- Parents or carers will normally be informed (unless this would put the child at greater risk).
- If a child is at risk of harm, is in immediate danger, or has been harmed, a referral will be made to Children's Social Care (01329 225379).

Risk Assessment:-



That they may have life; life in all its fullness - John 10:10

Following a report the DSL will make an immediate risk and needs assessment on a case-by-case basis.

The Risk assessment will consider;

- The victim, especially their protection and support.
- The alleged perpetrator, their support needs and any discipline action.
- All other children at the school.
- The victim and the alleged perpetrator sharing classes and space at school.

The risk assessment will be recorded and kept under review.

Where there has been other professional intervention and/or other specialist risk assessments. These professional assessments will be used to inform the school's approach to supporting and protecting pupils.

Action: The DSL will consider:-

- The wishes of the victim.
- The nature of the incident including whether a crime has been committed and the harm caused.
- Ages of the children/young people involved.
- Developmental stages of the children/young people.
- Any power imbalance between the children/young people.
- Any previous incidents.
- Ongoing risks.
- Other related issues or wider context.

Options: The DSL will manage the report with the following options:-

- Manage internally
- refer to Early Help
- Refer to Children's Social Care
- Report to the police (generally in parallel with a referral to Social Care)

Ongoing Response



That they may have life; life in all its fullness - John 10:10

- **All** concerns, discussions and decisions made, and the reasons for those decisions, should be recorded in writing. Records should be reviewed so that potential patterns of concerning, problematic or inappropriate behaviour can be identified and addressed.
- The DSL will keep the risk assessment under review.
- DSL will manage each report on a case-by-case basis and will keep the risk assessment under review.
- Where there is a criminal investigation into a rape, assault by penetration or sexual assault, the alleged perpetrator should be removed from any classes they share with the victim during that investigation.
- The DSL will consider how best to keep the victim and perpetrator apart on school premises and transport where appropriate.
- Where a criminal investigation into a rape or assault by penetration leads to a conviction or caution, the school will take suitable action. In all but the most exceptional of circumstances, the rape or assault is likely to constitute a serious breach of discipline and lead to the view, that allowing the perpetrator to remain in the same school or college would seriously harm the education or welfare of the victim (and potentially other pupils and students).
- Where a criminal investigation into sexual assault leads to a conviction or caution, the school or college will, if it has not already, consider any suitable sanctions in light of their behaviour policy, including consideration of permanent exclusion. Where the perpetrator is going to remain at the school or college, the principle of keeping the victim and perpetrator in separate classes where possible would be maintained and continued. Consideration would be given to the most appropriate way to manage potential contact on school and college premises and transport. The nature of the conviction or caution and wishes of the victim will be especially important in determining how to proceed in such cases.
- The victim, alleged perpetrator and other witnesses (children and adults) will receive appropriate support and safeguards on a case-by-case basis.
- When ongoing support is required by the victim, the victim should be asked whether they would find it helpful to have a designated trusted adult to talk about their needs. The choice of any such adult should be made by the victims (as far as reasonably possible) and this choice should be supported.
- The school will take any disciplinary action against the alleged perpetrator in line with behaviour and discipline in the school.



That they may have life; life in all its fullness - John 10:10

- The school recognises that taking disciplinary action and providing appropriate support are not mutually exclusive actions and will occur at the same time if necessary.

Unsubstantiated, unfounded, false, or malicious reports

- If a report is determined to be unsubstantiated, unfounded, false or malicious, the designated safeguarding lead should consider whether the child and/or the person who has made the allegation is in need of help or may have been abused by someone else and whether this is a cry for help. In such circumstances, a referral to children's social care may be appropriate.
- If a report is shown to be deliberately invented or malicious, the school or college, should consider whether any disciplinary action is appropriate against the individual who made it as per their own behaviour policy.

Physical Abuse

While a clear focus of peer on peer abuse is around sexual abuse and harassment, physical assaults and initiation violence and rituals from pupils to pupils can also be abusive.

These are equally not tolerated and if it is believed that a crime has been committed, will be reported to the police.

The principles from the anti-bullying policy will be applied in these cases, with recognition that any police investigation will need to take priority.

References: –

KCSiE (DfE 2022)

Sexual Violence and Sexual Harassment between Children in Schools and Colleges (DfE 2022)



That they may have life; life in all its fullness - John 10:10

Annex 6- Sexual Violence and Sexual Harassment between Children Risk and Needs Assessment Template

(This template is offered as a framework and should be seen as a starting point for development to fit your school's individual context. Each reported incident should be managed on a case-by-case basis)

EXAMPLE assessment

Presenting behaviours	What are the risks? Who might be harmed & how?	Action	Action by Who?	Action by when?	Action status or Date Completed & Outcome including further actions
<p>Behaviour:</p> <p>Forcing other children to engage in sexual activity.</p> <p>Subject is a male child. A female child has been taken into the boys'</p>	<p>All pupils in the class may be forced or coerced into sexual activity. Early indication is that female pupils may be more at risk.</p>	<p>Key members of staff with supervisory responsibility have been briefed by the DSL and will increase monitoring at break times.</p> <p>Subject will be escorted to the toilet.</p>	<p>DSL</p> <p>Staff AB, CD & EF</p> <p>ELSA</p>	<p>From Immediate effect</p>	<p>01/02/2020 . Increased monitoring & toilet supervision in place</p>



That they may have life; life in all its fullness - John 10:10

<p>toilets. Subject has exposed himself, grabbed the girl by the wrist and forced her to touch his genitals.</p> <p>Subject is under the age of criminal responsibility.</p> <p>Subject has no known CP history</p> <p>There have been no previous concerns about the Subject.</p>	Other children within the community	<p>Subject's parents Informed re: Incident & behaviour and the risk plan put in place. Made aware of referral to CSD. Agreement for</p> <ul style="list-style-type: none"> Referral to CAMHS Increased monitoring & toilet. supervisor Keep safe work. 	DSL	01/02/20	<p>01/02/20</p> <p>Contract of agreement has been signed by the parents to include increased. monitoring, toilet supervision and keep safe work.</p>
		Referral to Children's social care	DSL	01/02/20	<p>01/02/20</p> <p>Children & Family Assessment to be completed by CAST</p>



That they may have life; life in all its fullness - John 10:10

	<p>Victims parents informed, and child's views gained.</p> <p>Child offered keep safe work.</p>	DSL	01/02/20	<p>üParents are satisfied with the school's actions & safeguarding measures so far. Child & family want child to remain in the same class.</p> <p>Keep safe work accepted.</p>
	Referral to CAMHS	DSL	02/02/20	<p>Referral made.</p> <p>ACTION – follow up with CAMHS as to the status of referral after 10 working days if not heard before</p>
	Safeguarding measures to be reviewed.	DSL & Key Staff members	09/02/20	<p>No additional concerns raised.</p> <p>ACTION - Review plan again in one weeks time</p>
	Keep safe work to be completed. Combination of whole class and targeted work to be carried out	ELSA	23/02/2020	<p>OUTSTANDING</p> <p>Work planned and due to be delivered w/c 16/02</p>



That they may have life; life in all its fullness - John 10:10

<p>Community Impact Assessment</p> <p>LOW The parents of the Subject and the victim are satisfied that the school is taking all necessary safeguarding measures to manage the risk. There are no indications at this stage for community unrest. This will be kept under review.</p>	<p>DSL and SLT to be aware of any community noises about the incidents.</p>	<p>DSL and SLT</p>	<p>05/04/2020</p>	
<p>Media</p> <p>Media and communication team to be informed if community impact assessment risk increases</p>	<p>SLT to contact HCC communication team if required. Monitor during term</p>	<p>SLT</p>	<p>05/04/2020</p>	



That they may have life; life in all its fullness - John 10:10

<p>Information Sharing.</p> <p>All information sharing has been completed in line with the school's CP and GDPR policies.</p>	<p>Relevant information to be recorded on each child's CP file as required.</p>			
<p>Social Media</p> <p>There are no current risks from community use of social media.</p> <p>This will be kept under review.</p>	<p>Monitoring of social media during the term</p>	<p>Key staff</p>	<p>05/04/2020</p>	



That they may have life; life in all its fullness - John 10:10

Identifying Behaviour	What are the risks? Who might be harmed & how?	Action	by Who?	by when?	Current status or Date completed & Outcome Requiring further actions



That they may have life; life in all its fullness - John 10:10

Annex 7 - Online Safety

As a school it is essential that we safeguard children from potentially harmful and inappropriate online material.

A comprehensive approach to online safety empowers staff to protect and educate pupils, students, and colleagues in their use of technology and establishes the following mechanisms to identify, intervene in, and escalate any concerns where appropriate.

The breadth of issues classified within online safety is considerable, but can be categorised into four areas of risk:

- **content:** being exposed to illegal, inappropriate or harmful content, for example: pornography, fake news, racism, misogyny, self-harm, suicide, anti-Semitism, radicalisation and extremism.
- **contact:** being subjected to harmful online interaction with other users; for example: peer to peer pressure, commercial advertising and adults posing as children or young adults with the intention to groom or exploit them for sexual, criminal, financial or other purposes'.
- **conduct:** personal online behaviour that increases the likelihood of, or causes, harm; for example, making, sending and receiving explicit images (e.g consensual and non-consensual sharing of nudes and



That they may have life; life in all its fullness - John 10:10

semi-nudes and/or pornography, sharing other explicit images and online bullying; and

- **commerce** - risks such as online gambling, inappropriate advertising, phishing and or financial scams. If we feel pupils, students or staff are at risk, we will report it to the Anti-Phishing Working Group (<https://apwg.org/>).

We ensure that online safety is a running and interrelated theme when devising and implementing policies and procedures.

We will consider how online safety is reflected as required in all relevant policies and embedded across all areas of the curriculum, included in teacher training and within the role and responsibilities of the designated safeguarding lead as well as discussions with parents.

Annex 8 - Whistleblowing

Whistleblowing in a safeguarding context

While the school has a separate whistleblowing policy, this is a summary sheet that outlines the process when there is a concern that safeguarding issues have not been reported or followed correctly.

This does not replace the whistleblowing policy and should be read in conjunction with the school policy.

Whistleblowing is a term that is used when staff want to report a concern within their organisation that involves their manager or a person senior to them in the organisation which may prevent them from following the normal reporting systems.



That they may have life; life in all its fullness - John 10:10

There are a limited number of areas that can be called Whistleblowing, and the policy protects staff from being punished for raising concerns.

Within **the** school, the headteacher is the senior manager and responsible for all staff. If you are concerned that any member of staff within the school is not following safeguarding processes or behaving in a way that is placing children at risk, you should in the first place make the headteacher aware.

If your concern is about the headteacher, you should raise this with the Chair of Governors.

If you would prefer to raise your concerns outside the school environment you are able to contact the NSPCC whistleblowing line on 0800 028 0285 or email help@nspcc.org.uk for national organisations or make contact with Hampshire County Council.

If you believe that a member of the school staff is harming a child (an allegation) and this has been reported to the headteacher and no action has been taken, or the member of staff you have concerns about is the headteacher, then you are able to contact the Local Authority Designated Officers (LADOs) on 01962 876364 or child.protection@hants.gov.uk

If you believe that a child is being abused by individuals outside the school, you should make a referral to Children's Social Care by calling 0300 555 1384 (office hours) or 0300 555 1373 (outside of office hours)

Annex 9 - Briefing sheet for temporary and supply staff

For supply staff and those on short contracts in *Name* school



That they may have life; life in all its fullness - John 10:10

While working in school, you have a duty of care towards the children and young people here. This means that at all times you should act in a way that is consistent with their safety and welfare. In addition, if at any time you have a concern about a child or young person, particularly if you think they may be at risk of abuse or neglect, it is your responsibility to share that concern with the school designated safeguarding lead (DSL).

This is not an exhaustive list but you may have become concerned as a result of:

- Observing a physical injury, which you think may have been non-accidental.
- Observing something in the appearance of a child or young person which suggests they are not being sufficiently well cared for.
- Observing child behaviour that leads you to be concerned about a child or young person.
- A child or young person telling you that they have been subjected to some form of abuse
- Observing adult behaviour that leads you to be concerned about their suitability to work with children or young people.

In any of the circumstances listed here, you must write down what you saw or heard, date and sign your account, and give it to the DSL as soon as possible and no longer than 24 hours later. This may be the beginning of a legal process – it is important to understand that legal action against a perpetrator can be seriously damaged by any suggestion that the child has been led in any way.

If a child talks to you about abuse, you should follow these guidelines:

- Rather than directly questioning the child, just listen and be supportive



That they may have life; life in all its fullness - John 10:10

- Never stop a child who is freely recalling significant events, but don't push the child to tell you more than they wish.
- Make it clear that you may need to pass on information to staff in other agencies who may be able to help – do not promise confidentiality. You are obliged to share any information relating to abuse or neglect.
- Write an account of the conversation immediately, as close to verbatim as possible. Put the date and timings on it, and mention anyone else who was present. Then sign it and give your record to the DSL who should follow due process, including contacting Children's Social Care if appropriate.

The school has a policy on safeguarding children and young people which you can find, together with the local procedures to be followed by all staff on Staff Hub or the website. .

If your concern involves the DSL or a member of the senior staff, contact the LADO on 01962 847364 or the NPSCC whistleblowing line on 0800 028 0285

Remember, if you have a concern, report it.



That they may have life; life in all its fullness - John 10:10

Annex 10 - What is child abuse?

The following definitions are taken from *Working Together to Safeguard Children* HM Government (2018). In addition to these definitions, it should be understood that children can also be abused by being sexually exploited, honour based violence, forced marriage or female genital mutilation.

What is abuse and neglect?

Abuse and neglect are forms of maltreatment of a child. Somebody may abuse or neglect a child by inflicting harm, or by failing to act to prevent harm. Children may be abused in a family or in an institutional or community setting, by those known to them or, more rarely, by a stranger. They may be abused by an adult or adults, or another child or children.

Physical abuse

Physical abuse may involve hitting, shaking, throwing, poisoning, burning or scalding, drowning, suffocating, or otherwise causing physical harm to a child. Physical harm may also be caused when a parent or carer fabricates the symptoms of, or deliberately induces, illness in a child.

Emotional abuse

The persistent emotional maltreatment of a child such as to cause severe and persistent adverse effects on the child's emotional development. It may involve conveying to a child that they are worthless or unloved, inadequate, or valued only insofar as they meet the needs of another person. It may include not giving the child opportunities to express their views, deliberately silencing them or 'making fun' of what they say or how they communicate. It may feature age or developmentally inappropriate expectations being imposed on children. These may include interactions that are beyond a child's developmental capability, as well as overprotection and limitation of exploration and learning, or preventing the child participating in normal social interaction. It may involve seeing or hearing the ill-treatment of another. It may involve serious bullying (including cyber bullying), causing children frequently to feel frightened or in danger, or the exploitation or corruption of children. Some level of emotional abuse is involved in all types of maltreatment of a child, although it may occur alone.

Sexual abuse

Involves forcing or enticing a child or young person to take part in sexual activities, not necessarily involving a high level of violence, whether or not the child is aware of what is happening. The activities may involve physical contact, including assault by penetration (for example, rape or oral sex) or non-penetrative acts such as masturbation, kissing, rubbing and touching outside of clothing. They may also include non-contact activities, such as



That they may have life; life in all its fullness - John 10:10

involving children in looking at, or in the production of, sexual images, watching sexual activities, encouraging children to behave in sexually inappropriate ways, or grooming a child in preparation for abuse (including via the internet). Sexual abuse is not solely perpetrated by adult males. Women can also commit acts of sexual abuse, as can other children.

Neglect

Neglect is the persistent failure to meet a child's basic physical and/or psychological needs, likely to result in the serious impairment of the child's health or development. Neglect may occur during pregnancy as a result of maternal substance abuse. Once a child is born, neglect may involve a parent or carer failing to:

- provide adequate food, clothing and shelter (including exclusion from home or abandonment)
- protect a child from physical and emotional harm or danger
- ensure adequate supervision (including the use of inadequate care-givers)
- ensure access to appropriate medical care or treatment

It may also include neglect of, or unresponsiveness to, a child's basic emotional needs.

The HSBC neglect strategy is used to provide a more detailed summary of neglect and the local thresholds for referrals.

Indicators of abuse

Neglect

The nature of neglect

Neglect is a lack of parental care but poverty and lack of information or adequate services can be contributory factors.

Far more children are registered to the category of neglect on child protection plans than to the other categories. As with abuse, the number of children experiencing neglect is likely to be much higher than the numbers on the plans.

Neglect can include parents or carers failing to:

- provide adequate food, clothing and shelter
- protect a child from physical and emotional harm or danger
- ensure adequate supervision or stimulation
- ensure access to appropriate medical care or treatment.



That they may have life; life in all its fullness - John 10:10

NSPCC research has highlighted the following examples of the neglect of children under 12:

- frequently going hungry
- frequently having to go to school in dirty clothes
- regularly having to look after themselves because of parents being away or having problems such as drug or alcohol misuse
- being abandoned or deserted
- living at home in dangerous physical conditions
- not being taken to the doctor when ill
- not receiving dental care.

Neglect is a difficult form of abuse to recognise and is often seen as less serious than other categories. It is, however, very damaging: children who are neglected often develop more slowly than others and may find it hard to make friends and fit in with their peer group.

Neglect is often noticed at a stage when it does not pose a risk to the child. The duty to safeguard and promote the welfare of children (*What to do if You're Worried a Child is Being Abused* DfE 2015) would suggest that an appropriate intervention or conversation at this early stage can address the issue and prevent a child continuing to suffer until it reaches a point when they are at risk of harm or in significant need.

Neglect is often linked to other forms of abuse, so any concerns school staff have should at least be discussed with the DSL.

Indicators of neglect

The following is a summary of some of the indicators that may suggest a child is being abused or is at risk of harm. It is important to recognise that indicators alone cannot confirm whether a child is being abused. Each child should be seen in the context of their family and wider community and a proper assessment carried out by appropriate persons. What is important to keep in mind is that if you feel unsure or concerned, do something about it. Don't keep it to yourself. The HSBC neglect toolkit provides a more detailed list of indicators of neglect and is available to all staff.

Physical indicators of neglect

- Constant hunger and stealing food
- Poor personal hygiene - unkempt, dirty or smelly
- Underweight



That they may have life; life in all its fullness - John 10:10

- Dress unsuitable for weather
- Poor state of clothing
- Illness or injury untreated

Behavioural indicators of neglect

- Constant tiredness
- Frequent absence from school or lateness
- Missing medical appointments
- Isolated among peers
- Frequently unsupervised
- Stealing or scavenging, especially food
- Destructive tendencies

Emotional abuse

The nature of emotional abuse

Most harm is produced in *low warmth, high criticism* homes, not from single incidents.

Emotional abuse is difficult to define, identify/recognise and/or prove.

Emotional abuse is chronic and cumulative and has a long-term impact.

All kinds of abuse and neglect have emotional effects although emotional abuse can occur by itself.

Children can be harmed by witnessing someone harming another person – as in domestic violence.

It is sometimes possible to spot emotionally abusive behavior from parents and carers to their children, by the way that the adults are speaking to, or behaving towards children. An appropriate challenge or intervention could affect positive change and prevent more intensive work being carried out later on.

Indicators of emotional abuse

Developmental issues

- Delays in physical, mental and emotional development
- Poor school performance
- Speech disorders, particularly sudden disorders or changes.

Behaviour



That they may have life; life in all its fullness - John 10:10

- Acceptance of punishment which appears excessive
- Over-reaction to mistakes
- Continual self-deprecation (I'm stupid, ugly, worthless etc)
- Neurotic behaviour (such as rocking, hair-twisting, thumb-sucking)
- Self-mutilation
- Suicide attempts
- Drug/solvent abuse
- Running away
- Compulsive stealing, scavenging
- Acting out
- Poor trust in significant adults
- Regressive behaviour – e.g., wetting
- Eating disorders
- Destructive tendencies
- Neurotic behaviour
- Arriving early at school, leaving late

Social issues

- Withdrawal from physical contact
- Withdrawal from social interaction
- Over-compliant behaviour
- Insecure, clinging behaviour
- Poor social relationships

Emotional responses

- Extreme fear of new situations
- Inappropriate emotional responses to painful situations (“I deserve this”)
- Fear of parents being contacted
- Self-disgust
- Low self-esteem
- Unusually fearful with adults
- Lack of concentration, restlessness, aimlessness



That they may have life; life in all its fullness - John 10:10

- Extremes of passivity or aggression

Physical abuse

The nature of physical abuse

Most children collect cuts and bruises quite routinely as part of the rough and tumble of daily life. Clearly, it is not necessary to be concerned about most of these minor injuries. But accidental injuries normally occur on the *bony prominences* – e.g., shins. Injuries on the *soft* areas of the body are more likely to be inflicted intentionally and should therefore make us more alert to other concerning factors that may be present.

A body map (annex 3) can assist in the clear recording and reporting of physical abuse. The body map should only be used to record observed injuries and no child should be asked to remove clothing by a member of staff of the school.

Indicators of physical abuse / factors that should increase concern

- Multiple bruising or bruises and scratches (especially on the head and face)
- Clusters of bruises – e.g., fingertip bruising (caused by being grasped)
- Bruises around the neck and behind the ears – the most common abusive injuries are to the head
- Bruises on the back, chest, buttocks, or on the inside of the thighs
- Marks indicating injury by an instrument – e.g., linear bruising (stick), parallel bruising (belt), marks of a buckle
- Bite marks
- Deliberate burning may also be indicated by the pattern of an instrument or object – e.g., electric fire, cooker, cigarette
- Scalds with upward splash marks or *tide marks*
- Untreated injuries
- Recurrent injuries or burns
- Bald patches.

In the social context of the school, it is normal to ask about a noticeable injury. The response to such an enquiry is generally light-hearted and detailed. So, most of all, concern should be increased when:

- the explanation given does not match the injury
- the explanation uses words or phrases that do not match the vocabulary of the child (adults words)



That they may have life; life in all its fullness - John 10:10

- no explanation is forthcoming
- the child (or the parent/carer) is secretive or evasive
- the injury is accompanied by allegations of abuse or assault

You should be concerned if the child or young person:

- is reluctant to have parents/carers contacted
- runs away or shows fear of going home
- is aggressive towards themselves or others
- flinches when approached or touched
- is reluctant to undress to change clothing for sport
- wears long sleeves during hot weather
- is unnaturally compliant in the presence of parents/carers.
- has a fear of medical help or attention
- admits to a punishment that appears excessive.

Sexual abuse

The nature of sexual abuse

Sexual abuse is often perpetrated by people who are known and trusted by the child – e.g., relatives, family friends, neighbours, babysitters, people working with the child in school, faith settings, clubs or activities. Children can also be subject to child sexual exploitation.

Sexual exploitation is seen as a separate category of sexual abuse. Indicators of CSE can be found below:

Child Sexual Exploitation (CSE) Child sexual exploitation is a form of child sexual abuse. It occurs where an individual or group takes advantage of an imbalance of power to coerce, manipulate or deceive a child or young person under the age of 18 into sexual activity (a) in exchange for something the victim needs or wants, and/or (b) for the financial advantage or increased status of the perpetrator or facilitator. The victim may have been sexually exploited even if the sexual activity appears consensual. Child sexual exploitation does not always involve physical contact; it can also occur through the use of technology (Definition and a guide for practitioners, local leaders and decision makers working to protect children from child sexual exploitation, February 2017).

- Exploitation can be isolated (one-on-one) or organised group/criminal activity



That they may have life; life in all its fullness - John 10:10

- There can be a big age gap between victim and perpetrator, but it can also be peer-on-peer
- Boys can be targeted just as easily as girls – this is not gender specific
- Perpetrators can be women and not just men
- Exploitation can be between males and females or between the same genders
- Children with learning difficulties can be particularly vulnerable to exploitation as can children from particular groups, e.g. looked after children, young carers, children who have a history of physical, sexual emotional abuse or neglect or mental health problems; children who use drugs or alcohol, children who go missing from home or school, children involved in crime, children with parents/carers who have mental health problems, learning difficulties/other issues, children who associate with other children involved in exploitation. However, it is important to recognise that any child can be targeted.

Indicators a child may be at risk of CSE include:

- ☐ going missing for periods of time or regularly coming home late;
- ☐ regularly missing school or education or not taking part in education;
- ☐ appearing with unexplained gifts or new possessions;
- ☐ associating with other young people involved in exploitation;
- ☐ having older boyfriends or girlfriends;
- ☐ suffering from sexually transmitted infections;
- ☐ mood swings or changes in emotional wellbeing;
- ☐ drug and alcohol misuse; and
- ☐ displaying inappropriate sexualised behaviour.

CSE can happen to a child of any age, gender, ability or social status. Often the victim of CSE is not aware that they are being exploited and do not see themselves as a victim.

As a school we educate all staff in the signs and indicators of sexual exploitation. We use the sexual exploitation risk assessment form (SERAF) and associated guidance to identify pupils who we believe are at risk and the DSL will share this information as appropriate with children's social care.

We recognise that we may have information or intelligence that could be used to both protect children and prevent risk. In such instances this will be reported to the designated safeguarding lead for referral to be considered to children's social care.

Characteristics of child sexual abuse:



That they may have life; life in all its fullness - John 10:10

- it is often planned and systematic – people do not sexually abuse children by accident, though sexual abuse can be opportunistic
- grooming the child – people who abuse children take care to choose a vulnerable child and often spend time making them dependent
- grooming the child's environment – abusers try to ensure that potential adult protectors (parents and other carers especially) are not suspicious of their motives.

Most people who sexually abuse children are men, but some women sexually abuse too.

Indicators of sexual abuse

Physical observations

- Damage to genitalia, anus or mouth
- Sexually transmitted diseases
- Unexpected pregnancy, especially in very young girls
- Soreness in genital area, anus or mouth and other medical problems such as chronic itching
- Unexplained recurrent urinary tract infections and discharges or abdominal pain

Behavioural observations

- Sexual knowledge inappropriate for age
- Sexualised behaviour or affection inappropriate for age
- Sexually provocative behaviour/promiscuity
- Hinting at sexual activity Inexplicable decline in school performance
- Depression or other sudden apparent changes in personality as becoming insecure or clinging
- Lack of concentration, restlessness, aimlessness
- Socially isolated or withdrawn
- Overly-compliant behaviour
- Acting out, aggressive behaviour
- Poor trust or fear concerning significant adults
- Regressive behaviour,
- Onset of wetting, by day or night; nightmares
- Onset of insecure, clinging behaviour



That they may have life; life in all its fullness - John 10:10

- Arriving early at school, leaving late, running away from home
- Suicide attempts, self-mutilation, self-disgust
- Suddenly drawing sexually explicit pictures
- Eating disorders or sudden loss of appetite or compulsive eating
- Regressing to younger behaviour patterns such as thumb sucking or bringing out discarded cuddly toys
- Become worried about clothing being removed
- Trying to be 'ultra-good' or perfect; overreacting to criticism.

Annex 11- Useful contacts

Key Personnel	Name (s)	Telephone No.
DSL	Mandy Payne mandy.payne@hordleprimary.co.uk	01425 611657



That they may have life; life in all its fullness - John 10:10

	http://hordle.hants.sch.uk/dsls/	Mobile as necessary from staff contacts
Deputy DSL(s)	Fiona Adams fiona.adams@hordleprimary.co.uk Lou Trim louise.trim@hordleprimary.co.uk Nat Riley natalie.riley@hordleprimary.co.uk http://hordle.hants.sch.uk/dsls/	01425 611657 Mobile as necessary from staff contacts
School's named "Prevent" lead	Fiona Adams fiona.adams@hordleprimary.co.uk	01425 611657 Mobile as necessary from staff contacts
School's Mental Health Lead	Fiona Adams fiona.adams@hordleprimary.co.uk	01425 611657 Mobile as necessary from staff contacts
Nominated Safeguarding Governor	Sarah Cearn sarah.cearns@hordleprimary.co.uk	Mobile as necessary from staff contacts
Chair of Governors	Karen Richards karen.richards@hordleprimary.co.uk	Mobile as necessary from staff contacts
Children's Reception Team		0300 555 1384 01329 225379
Out of hours social care		0300 555 1373
Police		101 or in emergencies 999
Safeguarding advisors / Local Authority Designated Officers (LADOs)	Barbara Piddington Fiona Armfield Shona McMinn (from 17/10/22)	HCC Safeguarding Unit 01962 876364 child.protection@hants.gov.uk
School nurse	New Forest and Romsey Team	023 80874537
Children's Service Department, District Service Manager		0300 555 1384



That they may have life; life in all its fullness - John 10:10

Early help manager		02380 383400
--------------------	--	--------------

Annex 12 - Table of changes 2022

Throughout the document changes have been made to punctuation, grammar and readability. These have not all been highlighted in the table below.

Page	Changes
Throughout the document	<p>Reference to KCSiE 2021 updated to 2022</p> <p>Language within the model policy has changed from peer on peer to child on child</p>
Page 4	<p>In the principles and values section – addition around professional curiosity</p> <ul style="list-style-type: none">• All adults working within the school should maintain professional curiosity if they are concerned about a child. <p>Reference to expectation on Governor training added</p> <p>“Governor training is provided as required by KCSiE 2022”</p>



That they may have life; life in all its fullness - John 10:10

Page 5	<p>Opportunities to teach safeguarding to include</p> <ul style="list-style-type: none">• The content of the curriculum will be tailored to the specific needs and vulnerabilities of individual children, including child who are victims of abuse, and children with SEND <p>Addition of <i>concerns and</i> in the title “Dealing with concerns and allegations against staff” to reflect KCSiE2022</p> <p>Change of wording from Dealing with allegations against pupils</p> <p>To Dealing with children abusing children</p> <p>Text changed to “If a concern is raised that a child under 18 abusing another child under 18, the ‘Child on Child Abuse’ guidance will be followed”</p>
Page 17	<p>Dealing with disclosures – additional bullet point in remember section</p> <ul style="list-style-type: none">• All staff should be aware that children may not feel ready or know how to tell somebody that they are being abuse, exploited or neglected and/or they may not recognise their experiences as harmful.
Page 21	<p>Annex 6 – referring to “KCSiE Chapter 5 and annex c” rather than “sexual violence and sexual harassment in schools and colleges guidance”</p>



That they may have life; life in all its fullness - John 10:10

Annex 7	Previous model risk assessment removed from this version. Individual schools can choose to retain this if they want All following annex numbering amended
Page 34	Change of LADO details

This policy was reviewed by the Governing Body in the year:	2022
This policy is scheduled for review in the year:	2023