

# Newsletter



SPRING TERM 1 • Week 1 • 5th January 2024

## Welcome back!

Happy New Year! We hope you all had a lovely Christmas break!

### The Den - important reminders

The Den Breakfast and After School Clubs are filling fast for Spring - if you require The Den this term, please book your child's sessions via Scopay.

Bookings can be made more than 24 hours in advance of sessions taking place via your child's Scopay account. If you require a last minute booking (within 24 hours of taking place), please call the school office on 01425 611657 or pop into reception. Please do not email requests for on the day bookings as it may not be seen in time.

#### Cancellations

Cancellations within 24 hours of a booking taking place cannot be accepted and will be charged. However, please do let us know where possible if your child will not be attending, so they are not sent to Den and can be collected from the classroom.

#### Payments - IMPORTANT

Please can we politely remind parents that bookings must be paid for in advance of sessions taking place. A lot of time was spent chasing outstanding balances last term, some of which remain outstanding as we head into Spring term and we are simply not in a position to sustain this as we approach the new term. A weekly email reminder of your outstanding balance will be sent - please action accordingly if you are sent a request to make payment.

#### Late collections

A reminder that late collections will incur a fee of £2.50 per 15 minutes and are payable via Scopay.

Thank you in advance for your co-operation with this.

### Census - menu changes

Wednesday 17th & Thursday 18th January

The school is allocated funding annually to cover the costs of UIFSM (Universal Infant Free School Meals) and the amount of funding received by the school is based on a head count of Infant children having a free lunch, on specific days, throughout the year. The first census date is Thursday 18th January and we would like to encourage as many children in YR – Y2 to have a school lunch on that day. So, if you have a child in YR to Y2 please help the school maximise this funding by signing your child up for a lunch.

#### Wednesday 17th January

Green - Quorn chicken pieces in a Yorkshire pudding

Blue - Sliced beef and Yorkshire pudding

Jacket potato with tuna

#### Thursday 18th January

Green - Margherita pizza with diced potatoes

Blue - Bubble salmon

Jacket potato with cheese

### Hordle Hub price increase

We know that families will be fully aware that the cost of living increases have seriously affected schools and businesses as well as families. Astronomical increases in energy costs have hit us very hard, and the cost of general consumables sadly continues to rise.

After rigorous discussion the governors have made the difficult decision to raise the cost of Hordle Hub clubs from £3 to £3.50 per session. We hope that families will agree that this continues to be exceptionally good value for money, and this will be our first Hordle Hub price increase since 2021.

We feel it is important to give parents as much notice as possible and therefore this price increase will not take effect until April 2024. All charges are reviewed annually, and these rates will be in place until at least March 2025.

# Attendance guidance

## What to do if my child is absent

**Please can we remind parents/guardians of our schools absence procedures:**

- Contact us as soon as possible (and before 9.30am at the latest) on the first day of absence; telephone (via the schools absence line), email or visit the school office
- Advise us on the nature of your child's absence. Please note that in the event of sickness and/or diarrhoea, the exclusion period is 48 hours since the last bout of illness.
- Update the school daily on subsequent days absence unless advised otherwise

If your child is absent and we have not heard from you by 9.30am at the latest, we will telephone you and any other contacts that have been provided to us to confirm your child's whereabouts. This is because we have a safeguarding duty to ensure your child's safety as well as their regular school attendance. A child not attending school is considered a safeguarding matter. This is why information about the cause of any absence is always required.

Please note, if no reason for absence is received before 12pm it is a safeguarding requirement for us to visit the family home to ascertain your child's well being.

---

Please help us to ensure the safeguarding of all children in our care.

## What to do if my child is late

**If you think your child will be arriving late at school please can we remind parents/guardians of our school late arrival procedures:**

- Contact us as soon as possible (and before 9.30am at the latest); telephone (via the schools absence line), email or visit the school office
- Advise us on the nature of your child's late arrival and a choice of lunch for the day, please note lunch orders have to be placed by 9:30am for the kitchen to have enough preparation time
- Sign in at the front office at the time of arrival (registers in the classrooms are closed after 9am).

Parents are unable to escort their child to the classroom if they arrive once the gates are closed.

Please help us to ensure the safeguarding of all children in our care.

## Very important notice

**Further to consultation with the police - should a child be unaccounted for at the end of the day - we will now be making a 999 call to alert them that a child is missing and providing all personal details of the pupil concerned.**

We will continue to carry out all other missing child procedures as per our policy in addition to the above which includes sweeps of school, local area and all known contacts and possible friendships.

For this reason, and in order that we do not unnecessarily waste police time, it is absolutely VITAL that you tell us if there is a change in pick up procedures or if your child is not going to attend a club that they would usually be expected to attend.

Thank you for helping to ensure the safety and welfare of children.

## Holiday in term time

Parents are strongly advised by the Government and Local Authority to avoid taking children out of school in term time because of the disruption it causes to their education.

If your child has unauthorised absences for 10 sessions (1 day is 2 sessions) or more in a 100 session period, you will be liable to a fixed penalty notice and a fine.

More information can be found here on the school website: **Absence from School**. If you have any queries, please speak to the school office.

## Illness & exclusion periods

It can be tricky deciding whether or not to keep your child off school or nursery or when they're unwell. Please visit the **website** for government guidelines about managing specific infectious diseases and advice for other illnesses.

In the interest of everyone enjoying a happy, healthy time at Hordle CE (VA) Primary School, we ask that all parents note the minimum periods of exclusion from school of most common childhood illnesses.

Please view **Exclusion Periods After Illness document** for the up to date guidance.

## Pantomime



We are really looking forward to seeing this year's Pantomime "Sinbad the Sailor" which will be performed to all the children on **Wednesday 17th January**. This year's performance is being provided by the West Midlands Children's Theatre company, who have visited us over recent years.

We would like to say an enormous thank you to Team PATCH for funding this event for the children, we are extremely grateful as always for your support.

## Polite reminder

Please remember that we are a nut and sesame free school due to some severe allergies within school. This includes desserts such as Battenburg and Bakewell, hummus and many cereal bars - please check ingredients before adding to your child's packed lunch.



## Snacks

May we ask parents of young children that if you provide grapes as part of your child's snack, these are cut in half for a safety of your child.



### Times Tables Rock Stars for Y4-6

TTRS highest average coin earned over the last 30 days was: Year 6 (11,615 coins)

The most engaged was: Year 6 (98%)

The highest average weekly minutes was: Year 4,5 & 6 (1 minute)



### Numbots for Y1-3

Numbots highest average coin earned over the last 30 days was: Year 3 (2,152 coins)

The most engaged was: Year 3 (79%)

The highest average weekly minutes was: Year 3 (19 minutes)



## REMINDERS

### Year R admissions

Applications for YR admissions in the school year beginning September 2024 must be submitted by **Monday 15th January 2024**.

For full information on how to apply and other key dates in the application process, please visit the **Hampshire admissions website**.

## Medication at school

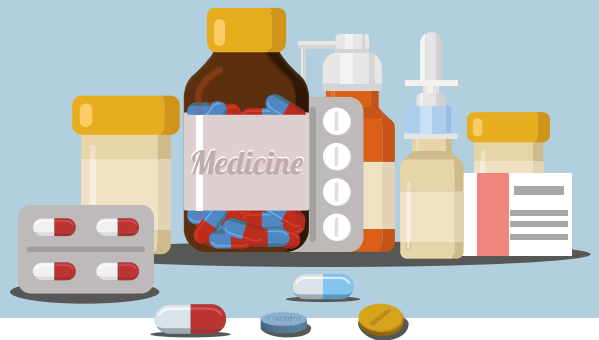
### Calpol provision

If you think your child might require Calpol, please ensure you provide it to the school office and ensure that the morning dose is given before 8am to enable us to administer again at 12 noon.

School Calpol supply is intended for an emergency use only and we are not able to fund medication for planned administration.

### Medication collection

If you bring any medication to school and your child has finished the course, please collect any remaining medication left at school.



## Updating contact details

It is essential that we have up to date contact details for parents and any emergency contacts listed on your child's pupil file. This is our safeguarding duty.

If you change contact details or move house please update your details via the Arbor App. We require proof of address for any change of address records.

Thank you for your support in ensuring our records are kept up to date.



## SAFEGUARDING

Are you worried about a child?

Contact the school Safeguarding Leads here: [dsl@hordleprimary.co.uk](mailto:dsl@hordleprimary.co.uk)

You can refer to Children's Services here: 0300 555 1381. To read the school's Child Protection Policy please click [HERE](#).



## FAMILY WORSHIP

*"My dear brothers and sisters, take note of this: Everyone should be quick to listen, slow to speak and slow to become angry."*

**James 1:19**

## E-SAFETY

### The National Online Safety

Please click [HERE](#) to register for an account which will enable you to access online safety information and free parent courses.



### Setting up parental controls on new devices

In children's eagerness to start enjoying new digital gadgets immediately, it can be easy to overlook setting up the type of parental controls that can help to protect them online. [HERE](#)'s what to look for when setting up the various internet-enabled devices.

## PE KIT DAYS

WEEK COMMENCING 8TH JANUARY

<b>FS</b> - Friday	<b>Oak</b> - Monday & Thursday
<b>KS1</b> - Tuesday & Friday	<b>Hawkhill</b> - Friday
<b>Ash</b> - Monday & Tuesday	<b>Wilverley</b> - Wednesday
<b>Hazel</b> - Monday & Wednesday	<b>Deerleap</b> - Wednesday

All children to come into school dressed in PE Kit.

# IMPORTANT DATES 2023/24

NEW DATES ARE IN **BOLD**

YEAR R ADMISSIONS CLOSING DATE

MONDAY 15TH JANUARY

SPRING HALF TERM HOLIDAY

MONDAY 12TH - FRIDAY 16TH FEBRUARY

PANTOMIME

WEDNESDAY 17TH JANUARY

SPRING TERM 2 START

MONDAY 19TH FEBRUARY

**WILVERLEY CAKE SALE**

**FRIDAY 1ST MARCH (MORE DETAILS TO FOLLOW)**

**MARCH INSET DAY**

**MONDAY 4TH MARCH**

**KS1 CHARITY DISCO**

**THURSDAY 28TH MARCH (MORE DETAILS TO FOLLOW)**

**EASTER HALF TERM**

**FRIDAY 29TH MARCH - FRIDAY 12TH APRIL**

**SUMMER TERM 1 START**

**MONDAY 15TH APRIL**